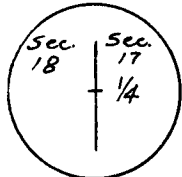


CERTIFIED LAND CORNER RECORDATION

T-15N, R-66-W.

DESCRIPTION OF CORNER EVIDENCE FOUND, AND ORIGINAL RECORD (If known)

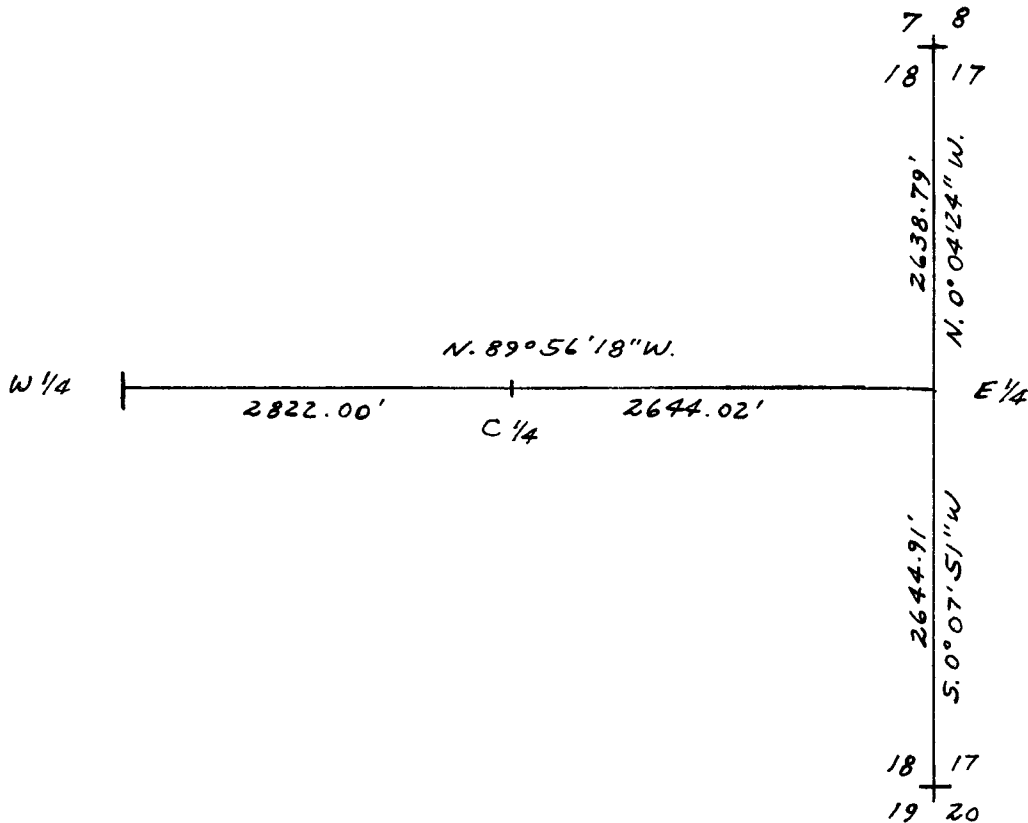
Found granite stone with 1/4 in northwest face. Original stone described as a granite boulder 15" x 8" x 7".



DESCRIPTION OF MONUMENT AND ACCESSORIES ESTABLISHED TO PERPETUATE THE ORIGINAL LOCATION OF THIS CORNER:

Set steel post beside stone as an accessory. Marked top of stone with an "x" as exact location used for corner.

SKETCH, WITH COURSE AND DISTANCE TO ADJACENT CORNER IF DETERMINED IN THIS SURVEY.
(May Sketch or Paste Reproduction on Reverse Side.)



I, Edward C. Fry certify that I have carefully performed ~~or reviewed~~ the work done on the diagrammed corner as reported on this recordation form and approve the same.

Edward C. Fry P.E./L.S. #662
Signature of Surveyor Registration No.

STATE OF WYOMING,
Office of Clerk and Recorder,
County of Laramie

317703

This "corner record" was filed for record on the 22 day of February, 1979, was noted on the cross-index plat and is assigned page No. _____, in book No. _____.

Janet C Whitehead
County Official

Cross Index No. <u>45</u>	T. <u>15</u>	R. <u>66</u>	Mer.
_____	T. _____	R. _____	Mer.
_____	T. _____	R. _____	Mer.
_____	T. _____	R. _____	Mer.
_____	T. _____	R. _____	Mer.
_____	T. _____	R. _____	Mer.